

HOLMES®



440-G2



Some Optional Equipment May Be Shown.

In 1916, Ernest Holmes pioneered a new industry with his first twin-boom wrecker. Holmes has continued that pioneering tradition for 100 years with quality and innovation that towers have come to rely on. One of the most popular light-duty units ever built was the Holmes 440, which became a 25-year industry standard for economy and dependability. That reputation lives on with the new Holmes 440-G2, a no-nonsense auto loader designed to tackle your towing needs. An 8,000-pound recovery boom, 8,000-pound winch and an auto load system rated at 4,000 pounds with in-cab controls for quick and easy operation make the 440-G2 ideal for light-duty towing. The carbon-steel modular body features two spacious tool compartments for equipment storage. For a quick, reliable and economical answer to your towing needs, check out the Holmes 440-G2.

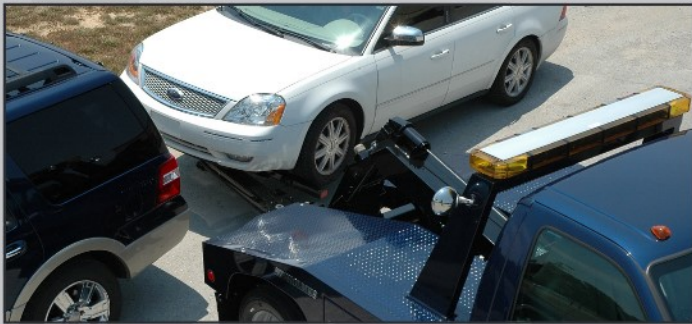
Proven Design & Technology

Standard Features

- 60" C.A. Steel Modular Body
- Adjustable Body Width 88" or 94"
- Driver & Passenger Side Tool Compartments
- Toolbox Lighting
- Wired 10 Function In Cab Remote Control
- Power Elevation
- Auto Load Wheel Lift System
- 180° Pivoting Crossbar
- Self Centering Crossbar
- 8,000 lb. Planetary Winch
- 360° Sheave Head
- Cable Tie Back
- Cable Tensioner
- Manual Winch Free Spool
- Hydraulic Fold
- 2-Stage Design
- Safety Chains, 5/16" Grade 70
- Safety Chains in Rear Pockets
- Wheel Lift Ratchets & Straps
- In Cab Wheel Lift & Winch Controls
- Junction Box and Wiring Harness
- Mud Flaps
- Removable Access Cover for Hydraulic Filter Service
- Back Up Alarms
- Federal Standard 108 Lighting
- Tire Spacers (Flat Tires)



Proven Design & Technology



The Holmes 440-G2 is capable of hooking up to a vehicle at a 90° angle such as parallel parked vehicles.

Specifications

BOOM

Recovery Boom (at boom end swivel)	8,000 lbs.
Maximum Lift Angle	21°
Winch (Planetary).....	8,000 lbs.
Cable.....	3/8" x 100'

UNDERLIFT

Lift Capacity Extended.....	4,000 lbs.
Tow Rating	7,500 lbs.
Maximum Reach	73"
Optional Power Tilt	30° arc

Chassis Recommendations

Minimum Cab to Axle (C.A.).....	60"
Maximum Cab to Axle (C.A.).....	84"
Minimum GVWR.....	14,500 lbs.
Maximum Frame Height	34"

Optional Features

- Power Tilt
- Power Tilt with Adjustable Limiter Switches on Elevation and Tilt Functions
- Steel Light Pylon
- Aluminum Tubular Light Pylon
- Trailer Hitch Attachment
- Motorcycle Attachment
- Dress Up Packages
- Emergency Lighting
- Dollies & Mounting Options
- Clutch Pump or Pump/PTO
- 24" Tunnel Toolbox



The Optional Power Tilt feature on allows the wheel lift to operate through a 30-degree arc, which provides easier hook-ups on driveways or sloped roads.

All ratings are based on structural factors only, not vehicle capacities or capabilities. Specifications shown are approximations and may vary depending on chassis selected. Miller Industries Towing Equipment Inc. reserves the right to change or modify product and or specifications without notice or obligation. Some equipment shown is optional.



©2015 Miller Industries Towing Equipment Inc.
All Rights Reserved.



8503 Hilltop Drive • Ooltewah, TN 37363
800-489-2401 • 423-238-7227

www.MillerInd.com